

Likupang Special Economic Zone



Likupang: The Beauty Untouched from Northern Part of Sulawesi. Likupang Special Economic Zone become one of the Indonesian Government Super Priority Investment Project. Likupang SEZ offer perfect tourism luxury resort, cultural tourism, eco tourism, and more than 30 dives spot.

Operator : PT. Minahasa Permai Resort Development
Administrator : North Sulawesi Regional Government
Concession Agreement : BOO (Build-Own-Operate)/ BOT (Build-Operate-Transfer)



Strategic Location

Likupang, North Minahasa

An Area : 197 Ha

Accessibility:

± 1 hour 30 Minutes from Samratulangi Airport
 ± 1 hour 45 Minutes from Manado City
 ± 1 hour from Bitung International Hub Port



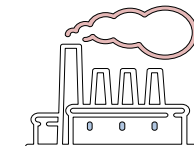
High Investment Value

Investment Value :
USD 1 Billion



Incentive

- Tax Holiday
100% Corporate Income Tax Recustion
- Tax Allowance
Net income deduction of 30% for 6 years
- Easy Licensing
3 hours investment license



Priority Sector

- Premium Resort (1,105,537m²)
- Nomadic Resort (158,170 m²)
- Residential (1,313 m²)
- Shopping and Dinning(10,694 m²)
- Wallace Conservation
- Yacht Marina