

INTEGRATED LOW-COST APARTMENT BUILDING In Sei Mangkei Special Economic Zone

Overview



Project Description

This Low-Cost Building apartment is intended for workers in Sei Mangkei Special Economic Zone (SEZ). More than 1800 people work in Sei Mangkei but has an issue of sufficient housing facilities.

This area would be completed with another supporting facilities such as playground, mosque, gas station, and entertainment plaza.

Location	Sei Mangkei SEZ, Simalungun Regency
Investment Value	IDR 1.2 Trillion
Financing	Gov't budget: IDR 53,78 Billion National budget: IDR 193,01 Billion PPP: IDR 965,5 Billion
Project Owner	Governor of North Sumatra
Project Developer	Housing and Residential Area Reg. Gov't Board
Main Activities	Low-Cost Building Apartment
Project Status	1) OBC and FBC completed in 2020 2) 1 st market sounding has been done in June 2020

Contact Person



Name : Ida Mariana Harahap
Occupation : Head of Housing and Residential Board in North Sumatra Province
Mobile : +62 812-6973-6711
Email : dinas_pkp@sumutprov.go.id

INTEGRATED LOW-COST APARTMENT BUILDING In Sei Mangkei Special Economic Zone

Overview

DATA BANGUNAN *Building Data*



RUSUNAWA RENTAL APARTMENT

- Terdiri dari 3 Tower
(672 unit)

3 towers

- Kapasitas 1 tower :
224 unit

Tower Capacity: 224 Unit

- Jumlah Lantai :
18 Lantai

Floor Total: 18 Floor Level

- 14 Lantai hunian
dan 4 lantai parkir

*14 Floor for Flathouse unit and
4 Floor for Parking*



BANGUNAN MIX USE *Mix Use Building*

1. Apartment
 - Total Floor: 16
 - Ground Floor-5th floor: room, rooftop
 - 6th floor: various facilities, 7th – 16th floor: room, rooftop
 - Studio Type Room (tipe 44): 77 unit
 - Family Room (tipe 80): 55 unit
2. HOTEL
 - Total Floor: 15
 - 1st floor: lobby, 2nd - 3rd floor: core lift
 - 4th – 6th floor: facilities, 7th floor: Hall
 - 8th – 15th floor: room, rooftop+helipad
 - Deluxe room (4x8m): 90 unit
 - Suite room (5x9m): 27 unit
3. COMMERCIAL UNIT/HYPERMART
 - Total Floor: 4
 - 1st – 3rd floor: Hypermart and other retail store
 - 4th floor: service
4. SWIMMING POOL

INTEGRATED LOW-COST APARTMENT BUILDING In Sei Mangkei Special Economic Zone

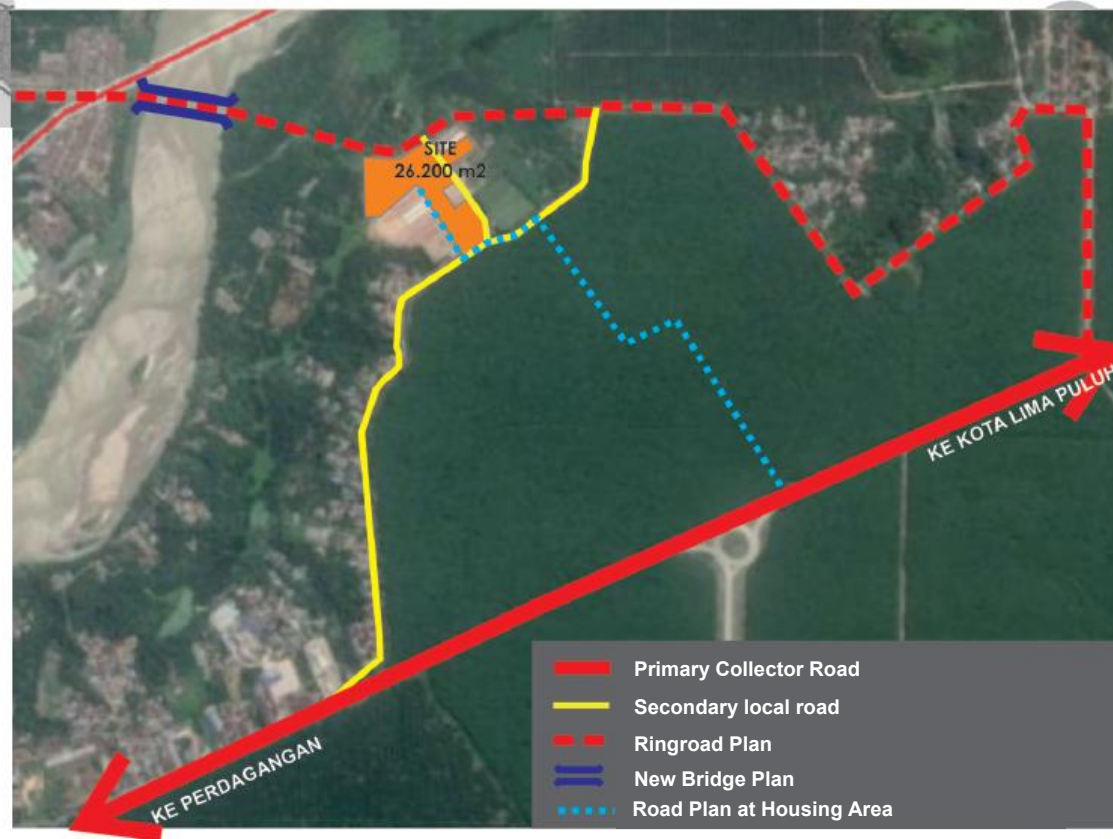
Location



TITIK KORDINAT

Location Coordinate

3°10'07.5"N ; 99°20'43.0"E



INTEGRATED LOW-COST APARTMENT BUILDING In Sei Mangkei Special Economic Zone

Site Plan

SITE PLAN

LEGENDA	KETERANGAN
	RENCANA PENGEMBANGAN RINGROAD (BPIW)
	JALAN LOKAL SEKUNDER
	RENCANA JALAN DI KAWASAN RUSUNAWA
	RENCANA PEMBANGUNAN JEMBATAN BARU (BPIW)
	LOKASI KERAMAT KUBAH

LEGENDA	KETERANGAN
A	ENTRANCE UTAMA
B	FASILITAS SPBU
C	FASILITAS FOOD ARCADE
D	RUANG TERBUKA TERPADU
E	FASILITAS IBADAH (MASJID)
F	TOWER HOTEL MIX USE BULIDING (16LT)
G	TOWER APARTEMEN MIX USE BUILDING (16LT)
H	HYPERMARKET MIX USE BUILDING (3LT)
I	RUSUNAWA KPBU (18LT)
J	RUSUNAWA BANTUAN KEMENTERIAN (4LT)
K	ENTRANCE SEKUNDER



INTEGRATED LOW-COST APARTMENT BUILDING In Sei Mangkei Special Economic Zone

Supporting Facilities

